

Dates for Your DIARY



Tuesday 3rd September 2024

School opens

16th –22nd September

Recycle week

9-13th September

Savings week

10th October

World Mental Health Day

Friday 25th October

Last day of the half term

Monday 4th November

School opens

A message from the PRINCIPAL

Dear Parents and carers,

Wow! What an end to a fantastic year!

I can't believe how quickly the time has flown. It is with mixed emotions that we say goodbye to our amazing Year 6 class of 2023-24. We are so proud of the individuals that you have become and we know that you will shine like a 'Stars' at high school. On behalf of the staff, I want to thank you for all the memories.

I want to thank yourselves, your children and the staff for making Star a great place to work and to learn.

Sadly, we say goodbye to Mr Farr,

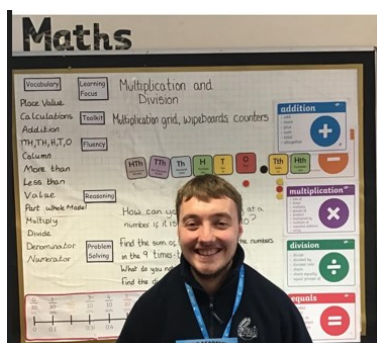
who has been an absolutely amazing teacher this year. Mr Farr, we wish you success at your new school. No words could do you justice for how wonderful you are. We are going to miss you!

Thank you to all of the parents that voted for the school day hours, the majority voted for 8.30 until 3. We will begin this when we return on Tuesday 2nd September.

I wish you all a wonderful summer break and look forward to seeing you when we return in September.

Mrs Sara Bloor

Principal



Term Dates & Inset Days

Term Dates 2024/2025

Autumn 1

Term starts: Monday 2nd September 2024 – Friday 25th October 2024

Half term holiday: Monday 28th October 2024 – Friday 1st November 2024

Autumn 2

Term starts: Monday 4th November 2024 – Friday 20th December 2024

Half term holiday: Monday 23rd December 2024 – Friday 3rd January 2025

Spring 1

Term starts: Monday 6th January 2025- Friday 14th February 2025

Half term holiday: Monday 17th February 2025 to Friday 21st February 2025

Spring 2

Term starts: Monday 24th February 2025 – Friday 11th April 2025

Half term holiday: Monday 14th April 2025 – Friday 25th April 2025

Summer 1

Term starts: Monday 28th April 2025- Friday 23rd May 2025

Half term holiday: Monday 26th May 2025 to Friday 30th May 2025

Summer 2

Term starts: Monday 2nd June 2025 – Monday 21st July 2025

Summer holidays: Tuesday 22nd July 2025 – 1st September 2025

Training Days – Academy closed to pupils

Monday 2nd September 2024

Friday 29th November 2024

Friday 28th March

Friday 6th June 2025

Friday 20th June 2025

Monday 21st July 2025

Safeguarding



This Month's Focus

With the summer holidays approaching and many people undertaking more car journeys with their children, we thought it would be useful to send this information regarding the UK law on the use of car seats and child-safety in cars.

Sadly, we are still being made aware of some children arriving at school in cars without any safety restraint, including some who have been standing between the front seats of the car and this is a real concern. If children are not properly restrained in cars, the results can be catastrophic in the event of an accident.

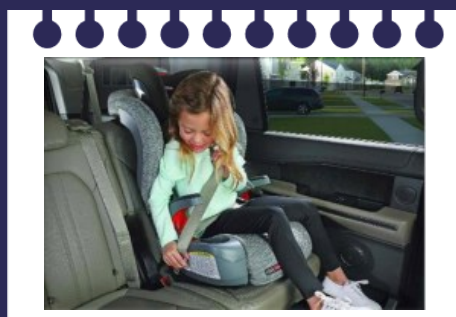
Did you know?

“Seat belts did not become a legal requirement for rear passengers until 1987? Even more remarkably the use of children’s car seats wasn’t made a legal requirement until 2006! Since then, all infants from birth until a certain age or height must be in a specially designed car seat. This is a legal requirement and failure to do so will likely result in you receiving a £500 fine but, of course, the threat of a cash fine pales into insignificance when compared to the realities and outcomes of an accident.”

Main points of the law:

- 1) **Height based seats are required to used REAR FACING for a minimum of 15 months.**
- 2) **A suitable* child car seat must be used until the child reaches a height of 135cms or 12 years old, whichever is reached first. *suitable = a seat that is intended for the child’s height, weight and the vehicle it is to be used in.**

The purpose of the regulations and the law is to improve levels of safety for children in vehicles. It is our responsibility to ensure our children are protected to the best of our ability.



Our Fantastic Year Six



Wow! 100% Attendance!

A huge well done to the following pupils, who have achieved 100% for the whole academic year:

Sipara (Y3), Simon (R), Antonia (R), Brikel (Y5), Elizabeth (Y1), Vassey (Y5), Veto (Y1), Vanise (Y3), Noah (Y4), Laynie (R), Max (Y5), Lexi (Y6), Mafaro (Y3), Aida (Y6), Amelia (Y4), Tyler (Y6), Ryan (Y4) and Cristian (Y6).



ATTENDANCE

Year to date attendance—
95.4%.

Pleas help us to get to
green.

Year to date attendance for each
class,

Reception— **95.6%**

Year 1— **95.1%**

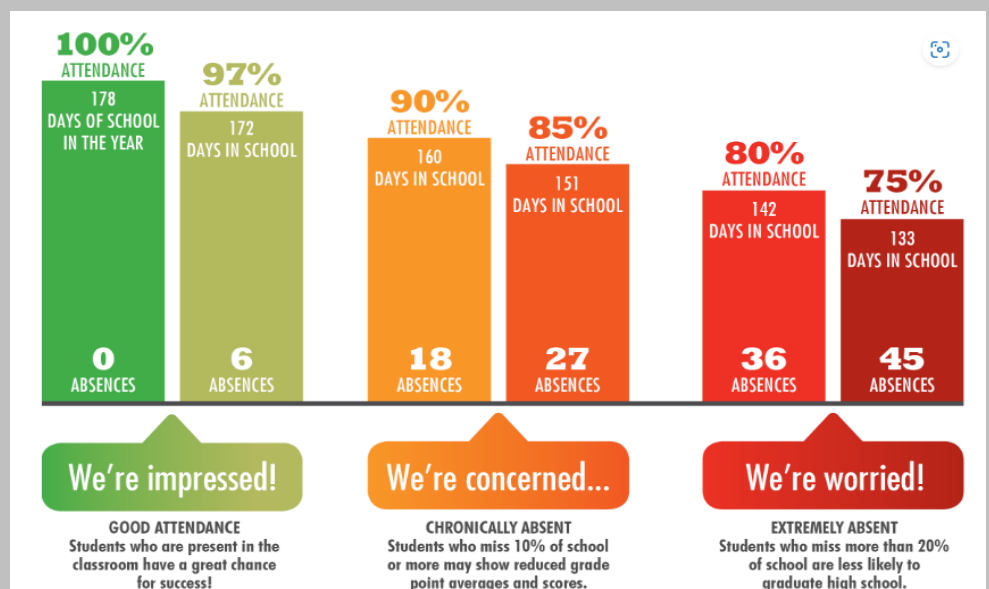
Year 2— **95.6%**

Year 3— **94.6%**

Year 4— **95.9%**

Year 5— **95.3%**

Year 6— **95.4%**



ATTENDANCE

WHAT THE NEW RULES MEAN FOR ME

1

I'm a single parent of one child and we want to go on holiday for a week.

Your holiday will not be authorised and you must talk to the school before you book anything.
Because your child will miss 5 school days you will be given a penalty notice fine.
The fine is £160 but if you pay it in 21 days it will be reduced to £80.

£160



2

FOR EVERY CHILD A PENALTY IS GIVEN.



+ £160 + £160 + £160 + £160

4 children & 1 parent = £640

Reduced to £320 if paid in 21 days

IRREGULAR ATTENDANCE

10 IN 10

5

If your child is absent for 10 or more sessions in 10 weeks and their absences are unauthorised. The school will consider prosecution.

1 Day = 2 Sessions

3

FOR A FAMILY OF TWO PARENTS



+ £160 + £160 + £160 + £160



**4 children & 2 parents =
£1280**

Reduced to £640 if paid in 21 days

If in any period of not more than 3 years, your child has a 2nd and 3rd leave of absence or pattern of irregular attendance...

4

2ND TIME

2 parents and
1 child = £320
2 children = 640
3 children = 960
4 children = 1280

No discount for early payment



3RD TIME

A penalty notice fine will not be given. Instead, your case will be taken to court.

A magistrate can fine each parent
£2500 for each child

**1 parent & 4 children = £10,000
2 parents & 4 children = £20,000**

We have a new phonics scheme



Find out more:~ [For parents | Letters and Sounds \(littlewandlelettersandsounds.org.uk\)](https://www.littlewandlelettersandsounds.org.uk)

From September 2024, Star will be following the Little Wandle Letters and sounds programme for phonics and reading.

About the programme – Little Wandle phonics programme

Phonics is taught daily in Nursery, Reception, Year 1 and Year 2.

Each lesson for phonics lasts between 10 and 30 minutes depending on the age and stage of the children being taught.

Learning is reinforced and applied in context throughout the day.

There is a consistent approach to the teaching of reading across the school, including the pronunciation of phonemes (the letter sounds) and the introduction of new formation phrases.

All children in the class are taught the same graphemes (the sounds written down) with children who need additional support having reinforced teaching on the same day.

Children blend the sounds to read and segment to spell. Termly assessments (every six weeks) are used to chart children's progress and identify gaps in knowledge.

Repeated practise occurs in all aspects of the lesson.

Children are taught overt blending, but fluent blending in their heads is the ultimate goal.

Both spelling and reading are practised daily.

Academy Day 2024/2025



From Tuesday 3rd September, our Academy day will be from 8.30 am to 3pm.

Thank you to all the parents and carers, who completed the survey for the hours of the school day.

From September, schools are required to provide a 32.5 hour week for pupils, including lunch. The majority of responses decided on an 8.30 start and a 3pm end of day, with **lateness being recorded from 8.45.**

Booster clubs to for maths & English will run until 3.45. Wider curriculum clubs will run, until 3.45.

My Child at School App (MCAS)

The MCAS app has been used throughout the academy, this year, to share behaviour points and attendance for your child.

In September, this app will also be used for all online payments, announcements and parent evening appointments.

A screenshot of the 'my child at school.com' login page. It features a 'PARENT LOGIN' section with fields for 'Email' and 'Password'. There are links for 'Reset Password' and 'Sign Up'. A 'Remember Email Address' checkbox is present. At the bottom, there is a 'Login' button and footer text: 'v5 2024.8955.30747' and 'Powered by Bromcom'.

If you have not yet accessed your account, please contact Mrs Lewis via class dojo who can send a password reset email.

Week One Menu

Autumn/Winter 2024/25

	Monday	Tuesday	Wednesday	Thursday	Friday
Main Option One	McMonday's Ultimate Cheeseburger Served with crispy Diced Potatoes and Sweetcorn (v)	Beef Bolognaise 50/50 Minced Beef and Quorn in a rich Tomato Ragu with Pasta and Garlic Bread	Roast Loin of Pork Served with Mash, Seasonal Vegetables & Trimmings	Chicken Curry with Fluffy Rice, Naan Bread & Chutney	Fish & Chips Battered Fish served with Chips, Peas or Baked Beans
Main Option Two	Veggie Doner Kebab Served served in a Wholemeal Pitta with Salad, Crispy Potatoes and Sweetcorn (v)	Planet-Friendly Meatballs Spicy Tomato Sauce with Wholewheat Pasta (ve)	Veggie Shepherds Pie Quorn Mince cooked with Vegetables and topped with Creamy Mashed Potato (v)	Vegetable Dhal With Fluffy Rice, Naan Bread & Chutney (ve)	Selection of Pizzas Served with Chips, Peas or Baked Beans (v)
Light Bite	Pasta Bar Served with a choice of sauces and Garlic Bread	Jacket Potato Served with a choice of toppings	Chicken Tortilla Wrap Marinated Chicken and Salad wrapped in a Flour Tortilla	Jacket Potato Served with a choice of toppings	Pasta Bar Served with a choice of sauces and Garlic Bread
Dessert	Italian Crumble Cake	Sticky Toffee Pudding with Custard	Chocolate & Beetroot Brownie	Orange & Ginger Flapjack	Belgium Waffle Fruit Toppings

Classes in September:

The EYFS unit room will be Reception Class.

The previous Reception classroom will be Y1.

The previous Y1 classroom will be Y2.

The previous Y2 classroom will be Y3

The previous Y3 classroom will be an intervention room.

All other classrooms will remain the same.

Well done Y6!

National combined 61%
Star 58%

National writing 72%
Star 67%

National maths 73%
Star 71%

National SPaG 72%
Star 62%



STA-office@attrust.org.uk



01782 235055



staracademy.attrust.org.uk



@attstaracademy



Burnaby Road, Tunstall, Stoke-on-Trent
Staffordshire, ST6 5PT